

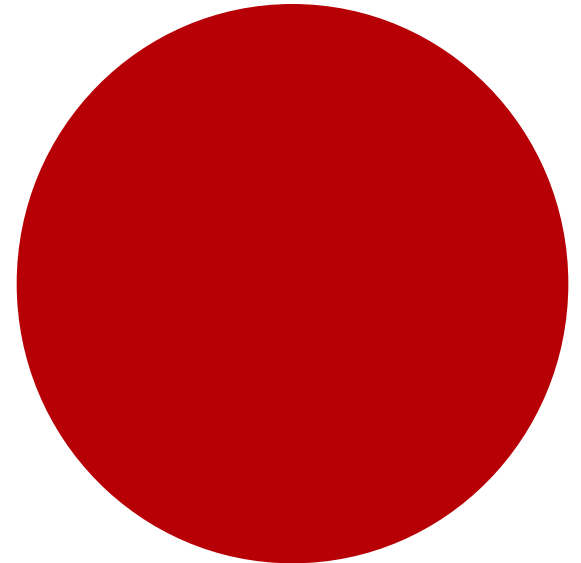
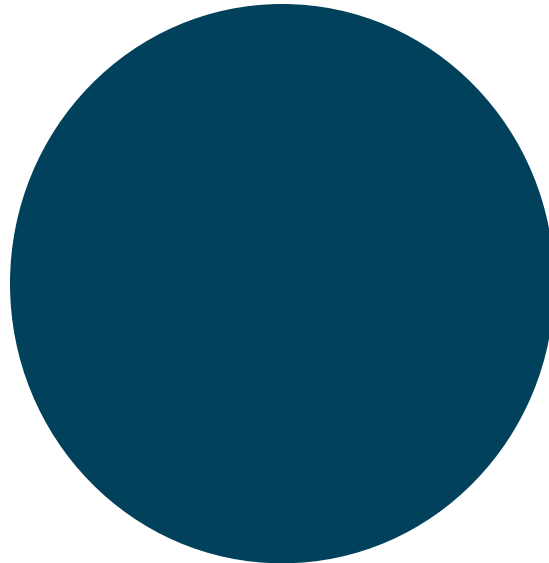
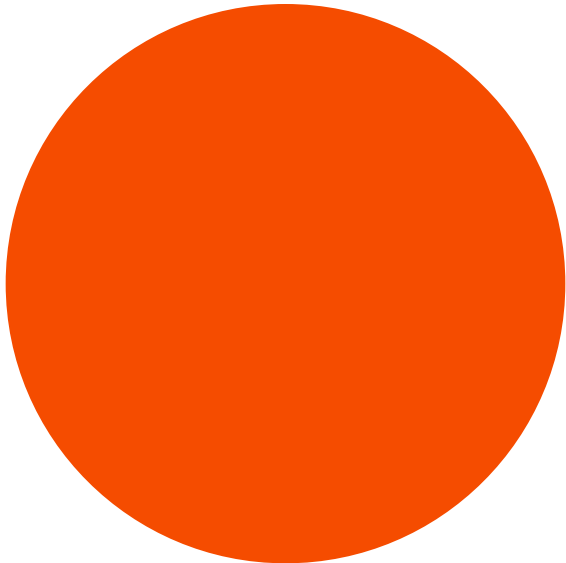


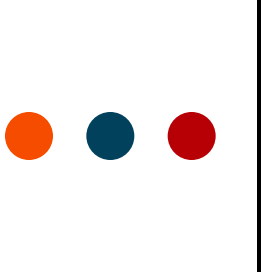
An Introduction to Maps

**Royal
Geographical
Society**

with IBG

Advancing geography
and geographical learning





What do the maps and globes feel and look like?

**Royal
Geographical
Society**
with IBG

Advancing geography
and geographical learning



Is the map flat and smooth?

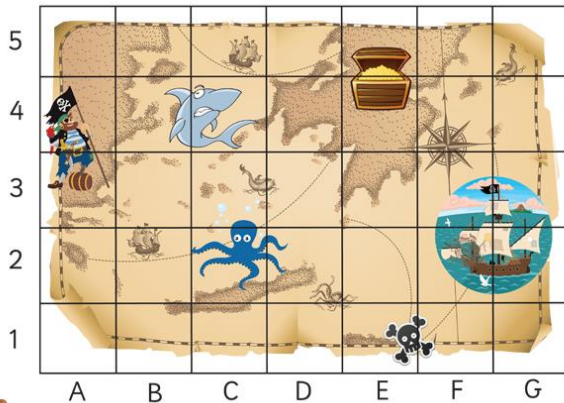
Is the Earth flat?

How are maps and globes different?

What 3-D shape is the globe?

Why are maps useful?

Look at a range of maps, plans and globes



Teachers
copyright www.tpet.co.uk

displays.tpet.co.uk



Wikipedia Commons



Wikipedia Commons

Have you seen maps like this before?

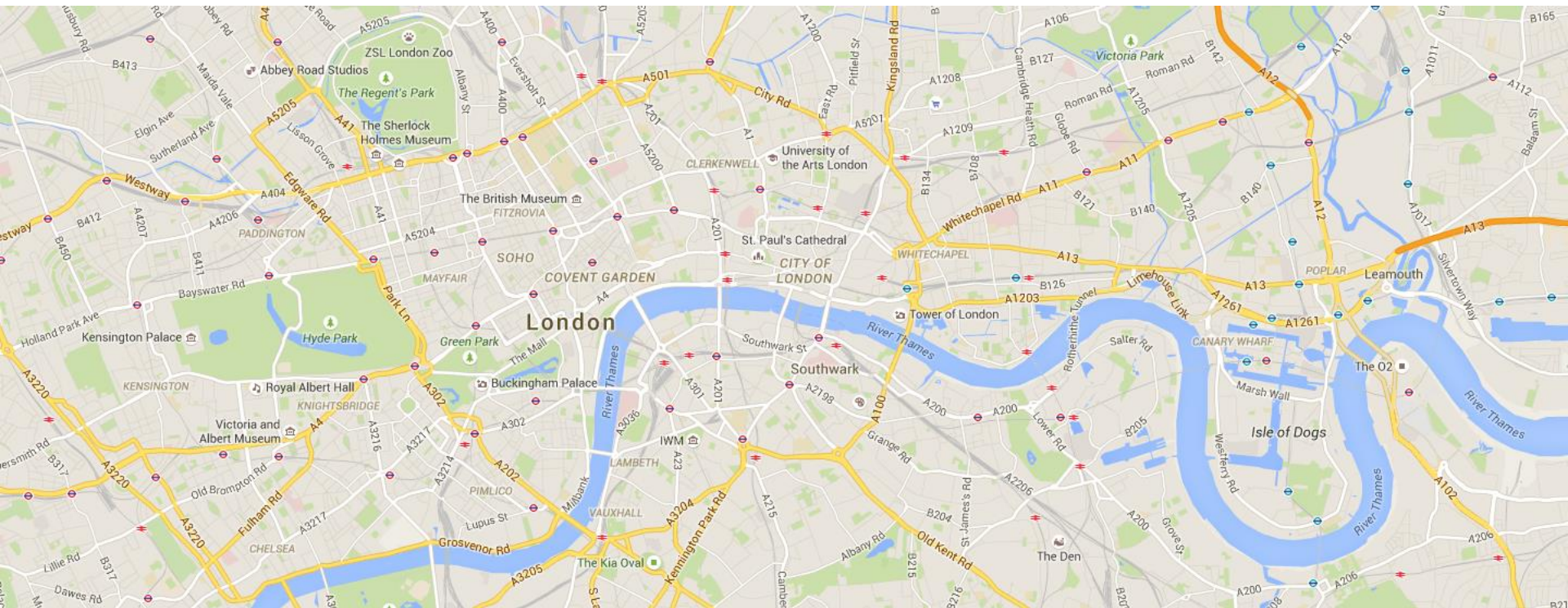
Where have you seen them?



Map of London

**Royal
Geographical
Society**
with IBG

Advancing geography
and geographical learning



What can you see on this map?



What do people use maps for?

- Maps are 2-D drawings of our world from above or a 'bird's eye view'.
- They help us find our way around and show where different places are in relation to each other (**distance and direction**).
- Maps can show small or large areas: from room plans to world maps.

The world from above: a bird's eye view

**Royal
Geographical
Society**
with IBG

Advancing geography
and geographical learning

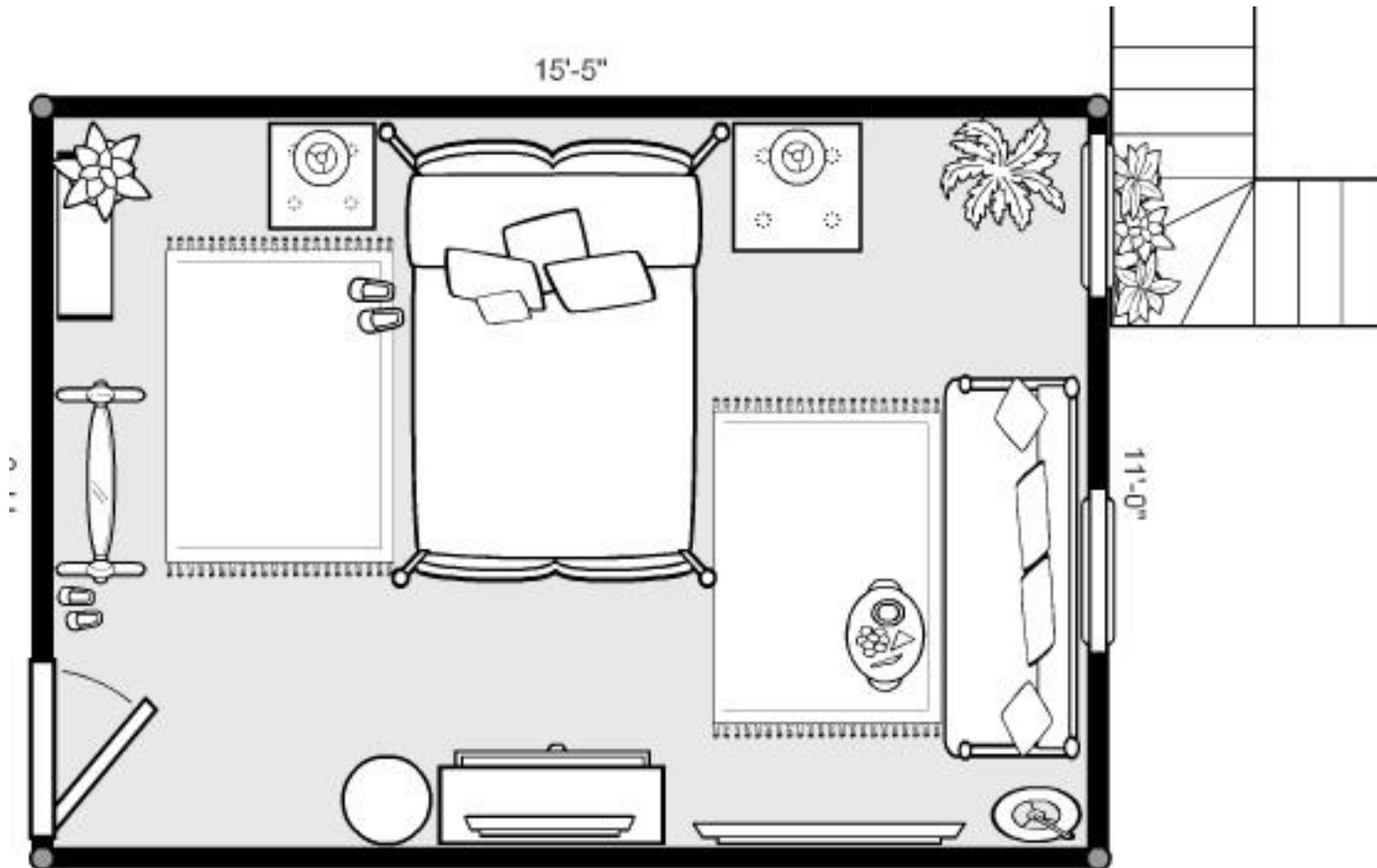


Project 365 #200: 190715 You Can See...© Pete, Flickr

Floor plans are a view from above

**Royal
Geographical
Society**
with IBG

Advancing geography
and geographical learning



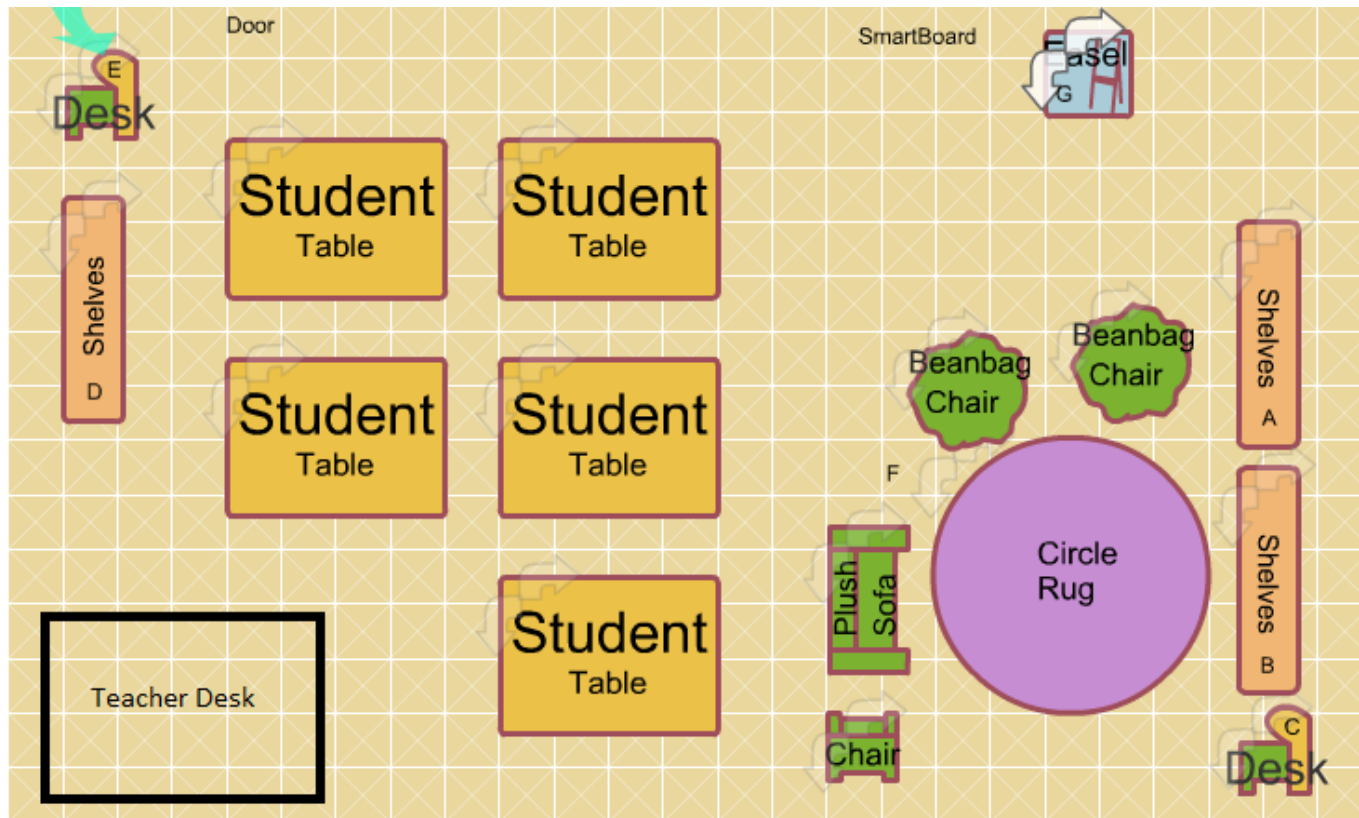
Mynextbedroom © Elif Altinbasak, Flickr

What can you see on this classroom plan?

Royal
Geographical
Society

with IBG

Advancing geography
and geographical learning



How would our classroom look from above?



Main Activity

Draw a plan of your home

**Royal
Geographical
Society**

with IBG

Advancing geography
and geographical learning

- Look around your home. What can you see?
- Try and draw what objects would look like from above, or from a 'bird's eye view'.
- Try and put everything in the right position.
- Include tables, chairs, doorways, beds.