



Date	Activity
<b>Thursdays</b>	Year 5 Swimming lessons until Easter
<b>18 March</b>	RockSteady Concert 2:30pm
<b>19 March</b>	Y6 visiting Cleeve High Dance Show 1:30pm
19 March	FOGS Easter Egg Trail
20 March	FOGS Easter Egg Trail
<b>22 March</b>	Term 4 Ends: 2pm finish
<b>8 April</b>	Inset Day
<b>9 April</b>	Term 5 Begins
<b>9 April</b>	Parents Evening
<b>11 April</b>	Parents Evening
<b>16 April</b>	<b>Bag 2 School Event</b>
<b>19 April</b>	Year 6 Parents meeting re Residential—3:30pm
<b>27 April</b>	<b>Family Bingo Event</b>
<b>9 May</b>	Y4 Assembly—2:30 pm
<b>w/c 13 May</b>	<b>Year 6 SATS (all Year 6 children MUST attend)</b>
<b>20-24 May</b>	Y6 Residential to Grittleton House Adventure
<b>24 May</b>	Term 5 Ends
<b>3 June</b>	Term 6 Starts
<b>4 June</b>	Class Photos
<b>18 June</b>	KS2 Sports Day—Timings to be confirmed
<b>19 June</b>	KS1 Sports Day—Timings to be confirmed
<b>9 July</b>	Y6 Performance—9:30 am more details to follow
<b>10 July</b>	Y6 Performance—5pm more details to follow
<b>17 July</b>	Y5 Visit to We The Curious
<b>17 July</b>	Y2 Performance—Timings to be confirmed
<b>19 July</b>	Y6 Graduation—1:15pm more details to follow
<b>19 July</b>	Term 6 Ends: 2pm finish
<b>22 July</b>	Inset Day
<b>21-25 Oct</b>	Y6 Residential to Grittleton House Adventure
<b>New Event or Change of Date/Time</b>	
<b>FOGS Event</b>	

### Lost Property

We are currently filtering through our lost property boxes, we will try and return any items which are named. All other items will be put outside by the mosaic owl during the final week of term. Any items left on the final day will be sorted, good-quality uniform will be added to our preloved boxes and all other items of clothing will be added to the FOGS Bags 2 School event. Please ensure that all items are labelled, it makes it much easier to return lost items.

### Message from Mrs Lewis

Hello!

I would like to take this opportunity to say a final farewell to you all. Across the last few weeks, I have had the chance to speak with many of you, thank you so much for your kind words. I have to admit that my emotions have been very mixed. To retire now has not been a decision I have taken lightly but I know that it is the right time for myself and my family.

Teaching has been a career that I have cherished, and were I to have my life again, I would not change my choices. I have had the privilege to work in nine different schools. My first class was a group of 34 Yr2's and Yr3's in East Hertfordshire. These youngsters will now be in their mid-40's. Some of the names and faces I can still remember and, as with all teachers, I often wonder how things turned out of them.

But it is at Grangefield that I have stayed the longest—nearly 14 years and the overriding reason is because I have been proud to be part of the Grangefield School Community, playing my own small part in shaping the future for the next generation of youngsters.

My thanks go to you, the parents and carers, for choosing Grangefield for your children and for supporting them, myself and the school community in so many different ways.

I know that I am leaving Grangefield and our children in the very capable hands of Mrs Kydd, Mrs Kay and the whole Grangefield Community and I know that the Grangefield children will continue to 'Fly High and Spread their Wings'.

To you all, I wish you the best of luck for all that the future holds. **Karen Lewis**



## Summer Menu

There will be a new Caterlink menu after the Easter holidays, this will run until October. We are still waiting for the special dietary ones, once these have received we will send them out to those who require them. The new menu has been uploaded to the [website](#).

## Parents Evenings—9th and 11th April

The online booking system will open at 8am on Monday 18th March at <https://grangefieldowl.schoolcloud.co.uk/>

These meetings will be held in your child's classroom. You may view their classwork before or after your meeting, outside their classroom. Please exit the school grounds after pick up to allow staff to ensure all children have got home safely and to prepare for meetings. Please be punctual for your appointment; if you are late unfortunately your meeting will be shorter. Teachers must end meetings promptly so not to impact on the next meeting. There will be a crèche for school aged children in the school hall and pre-loved uniform will also be on sale.

## Absences—Notification

A reminder that all absences should be reported via the School Office in the first instance, this can be done via the phone on 01242 671003 or via email at [admin@grangefield.gloucs.sch.uk](mailto:admin@grangefield.gloucs.sch.uk) You are more than welcome to follow up with a Class DOJO to the teacher, but be aware that this may not always be read in time, which may result in the school office phoning you.

## Gaining My Wings

In assemblies this week, the children have been introduced to an exciting new initiative, our 'Gaining My Wings' awards. The awards scheme is not compulsory but we would love to see as many children involved as possible as we truly believe taking part will contribute to your child's personal development and wellbeing. The majority of the activities are designed to be completed at home but staff members will be actively planning opportunities within school to support the awards. You can find out more about this on the school [website](#).



## Friends of Grangefield Corner

### Easter Trial—Tuesday 19th March and Wednesday 20th March

Are you able to crack the Easter code? Win a chocolate Easter Egg by unscrambling the letters hidden around school and revealing an Easter themed word!

We would prefer tickets to be brought upfront. Tickets can be purchased here <https://www.pta-events.co.uk/fogsbc/> Ticket

sales end on Monday 18th March at 1:00 pm. However, maps will be sold in the hall on the day.

## Bag 2 School

Bag 2 School is back on **Tuesday 16th April**. Have a Easter holiday clear out and help raise funds for the school. Bag 2 School will collect donations of good quality clothing and accessories, weigh them, send a cheque and re-distribute your donations. See Bag 2 School poster for more information.

Bags can be dropped off Monday 15th April and Tuesday 16th April before 9am, outside main Reception.

## Family Bingo

**SAVE THE DATE—Saturday 27th April**

Family Bingo event—more information to come!

If you have any questions, suggestions or feedback, we'd love to hear from you at [grangefieldpta@grangefield.gloucs.sch.uk](mailto:grangefieldpta@grangefield.gloucs.sch.uk)

**BAG 2 SCHOOL**  
FREE FUNDRAISING FOR SCHOOLS  
In partnership with your school or organisation

Grangefield School

Bag 2 School is a company that specialises in the reuse and recycling of good quality second-hand clothing and we have arranged to make a collection from your school. All the bags will be weighed and you will be paid for the total weight collected. Remember, the more you collect the greater the benefit to your school.

PLEASE USE YOUR OWN BAGS (THERE IS NO LIMIT).

When the clothes have been removed from the bag the plastic will be packed and sent for recycling.

We are collecting good quality items for RE-USE:  
Men's, ladies' & children's clothing, paired shoes, handbags, belts & accessories.  
(No uniforms, workwear, pillows, duvets or pieces of fabric please)

The more we weigh the more we pay!  
Extra bags are welcome - there's no limit

Please return your Bag2School on:

Tuesday 16th April 2024 by 9am

01609 780 222    www.bag2school.com    helpdesk@bag2school.com

## Girls Football

With the assistance of some of our Parents, we are trying to establish a Year 5/6 girls football team, in the hope to be able to take part in some inter-schools competitions next season. Here is a team report from Mr Harris (Arabella's Dad):

The girls have all taken to structured football practice amazingly well and I've been very impressed at their behaviour and how well they can listen to instructions. I am also impressed at how they are willing to bounce ideas off me, and how we have all been working together to make the sessions as enjoyable as possible.

It has been great in only three sessions to see improvements in those who already play for clubs, as well as those who are completely new to football—it's great to see them returning each week, but also from feedback from parents actually looking forward to the sessions and them becoming a highlight of their week.

I look forward to seeing them again after the Easter break, where we will look to transition from less drill based activities, into those where they are ready for matches. We practiced a match on the full pitch at the end of the last session, and even after such a short period of time, after instruction we were able to break up the team into defence, midfield and attack, with players not all following the ball and with an understanding of their positions.

Keep up the good work, and more importantly it's great to see the Grangefield girls playing football again.

On Monday 4th March, Mr Hyde took a team of Year 3 & 4 girls to Bishops Cleeve Football Club for a tournament. They won 3 games and had a wonderful time. For some of the girls, it was their first time playing football! Some future stars for the Year 5/6 Girls Football team.

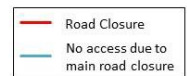
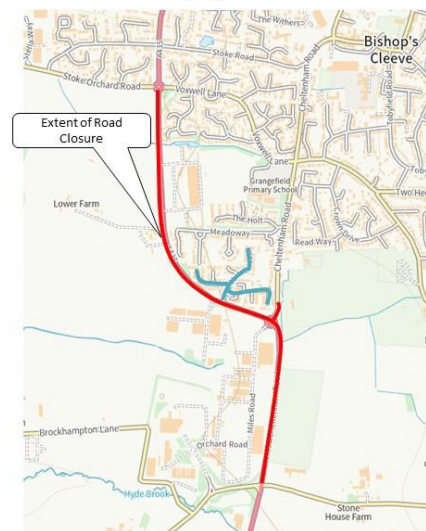


## A435 Bishops Cleeve Bypass and Roundabout—Road Closure

We have been informed of road closures to the south entrance to the village. This will be for approximately 10 nights (excluding weekends) between the hours of 19:00 to 07:00 for resurfacing works, the planned dates are currently Wednesday 3rd April until Tuesday 16th April. As this is an overnight closure, it shouldn't affect the school day, but may be worth considering when booking parents evening slots, especially the later evening ones, on 9th and 11th April.



Road closure extent for A435 Bishops Cleeve Bypass and Roundabout





**No waiting lists. Refer today!**

**Bf** BeeZee Families

**FREE Healthy Lifestyle Support for Gloucestershire families**

**Refer families to our FREE community weight management programmes!**

**12-week programmes STARTING SOON**  
support available for families with children aged 4-18

Online support available all year round!

**REFER IN 2 MINUTES**

beezeebodies.com/refer  
beezeebodies@nhs.net  
01452 717262

Cooking tips! Fun activities!

beezeebodies FVWAF Gloucestershire COUNTY COUNCIL

\*eligibility criteria applies, see website for details

### School Appeals—Volunteer Panel Member Recruitment

Gloucestershire County Council are in the process of recruiting volunteer Panel Members to assist with virtual School Admission Appeals. They are particularly in need of Parent Members (those with children currently in Education).

Here's the [link](#) to the relevant page on the Gloucestershire County Council website

**Families** Magazines

More than 4 million parents a year rely on us to get the best out of local family life!

### Families Magazine

Read the latest issue of [Families Magazine here](#)

### Gloucestershire Libraries

Digital April—June: What's on Guide: [What's on April-June 2024 by Gloucestershire Libraries—Issuu](#)

### Triple P—Positive Parenting Program

Helping parents deal with the everyday and the difficult issues attached to modern parenting.

Discussion Group Ages 0—12		
Bed Routines	23/07/24	12:30—2:30 pm
Dealing with Disobedience	29/07/24	12:30—2:30 pm
Managing fighting and aggression	19/08/24	12:30—2:30 pm
Hassle free shopping	28/08/24	12:30—2:30 pm
Discussion Group Ages 12+		
Getting teenagers to co-operate	24/07/24	12:30—2:30 pm
Dealing with teenager's emotions	30/07/24	12:30—2:30 pm
Building teenagers survival skills	20/08/24	12:30—2:30 pm
Reducing family conflict	27/08/24	12:30—2:30 pm

Triple P are offering Discussion Groups over the summer for families

If you would like to join any of these discussion groups, please email me, Allie Lack—Children and Family Support Worker at [admin@grangefield.gloucs.sch.uk](mailto:admin@grangefield.gloucs.sch.uk) stating which group you would like and I can make a referral for you.

**Spring Fayre**

For more information  
visit: [sueryder.org/springfayre](http://sueryder.org/springfayre)  
email: [leckhampton.fundraising@sueryder.org](mailto:leckhampton.fundraising@sueryder.org)

Entrance fee on day: £2.50  
**FREE** for children under 12

**JOIN US!**

**Saturday 23 March**  
10am—5pm  
Leckhampton Court Hospice grounds

BBQ, pop-up bar and tasty treats  
Live music and entertainment  
Leckhampton Court Tea Rooms  
Lots of family friendly activities

Sponsored by  
**PerryBishop**  
PROPERTY MANAGEMENT

Supported by  
**CREED**  
THE FOODSERVICE COMPANY

**Sue Ryder**  
Because no one should face death or grief alone



### Cleeve Residential Easter Rock Hunt

Monday 4th March to Monday 1st April

We have been busy hiding 9 Easter themed rocks around the village and local parks in the hope that you can find and return them to our office.

For every returned rock, you will receive an Easter egg and will be entered twice into our prize draw.

The prize draw will be held Tuesday 2nd April and 4 lucky winners will receive one of the following:

- Bar 9 £15 voucher
- Cleeve Fish Bar £10 voucher
- Black & Gold £10 voucher
- Cleeve Bookshop £10 voucher

Good Luck hunting! Hop to it!!

### Cleeve Residential Colouring Competition

Monday 4th March to Monday 1st April

Pop into Cleeve Residential to pick up a colouring sheet, then return it back to the office. Please ensure the completed entry has your child's name, age and a contact number on the back.

The winner will be announced on Tuesday 9th (first day back at school) and the 3 lucky winners will receive an Easter egg.

All entries will be displayed in our window so make sure they are bright and colourful!



For more information or to enquire about booking a place Please contact

Kerry:  
redbananadrama@yahoo.co.uk  
www.redbananadrama.com  
07818100314

**EASTER HOLIDAY  
ACTIVITY DAYS**  
Ages 8-12 10am-2pm

26<sup>th</sup> and 27<sup>th</sup> March - Tewkesbury Baptist Church  
4<sup>th</sup> and 5<sup>th</sup> April - Innsworth Junior School

OPEN TO ALL CHILDREN  
Aged 8-12 living in, or at school in Tewkesbury Borough  
Additional places for those on Free School Meals.  
Choose any dates you want to come!

Activities may include: Games, story telling, comedy, parachute activities and MORE...  
Something for everyone - with the aim of having lots of FUN and LAUGHTER!

Hot Meal included!!



Fun Science

EASTER ACTIVITY CLUB



THU 4-FRI 5 APR, 10AM-3PM  
CLEEVE SCHOOL, CHELTENHAM

eggs  
rockets

reactions  
bubbles

games  
sweets

SEE [TINYURL.COM/EGGSCI24](http://TINYURL.COM/EGGSCI24) FOR  
INFO AND TO BOOK PLACES NOW!

MOVE MORE  
EVERY CHILD THRIVES

CAMPS  
★★★★★



EASTER  
HOLIDAY ACTIVITY CAMP

25TH MARCH - 5TH APRIL  
@ FIVE VENUES ACROSS  
CHELTENHAM & GLOUCESTER



MOVE-MORE.ORG/CAMPS







Cheltenham Town  
**Community trust**

**EASTER HOLIDAYS 2024**  
**FOOTBALL HOLIDAY COURSES** AGES 5 - 12 | BOYS & GIRLS | 9AM TO 3PM

**GIRLS ONLY HOLIDAY COURSES AVAILABLE** (AGES 6-13)

**ALL ABILITIES WELCOME!**

**£14 PER DAY**

**COURSES HELD AT**  
CLEEVE SCHOOL SPORTS CENTRE  
ST JAMES PRIMARY SCHOOL  
BISHOPS CLEEVE FC

FOR MORE INFORMATION AND TO BOOK ON TO A COURSE, PLEASE GO TO:  
[WWW.OFFICIALSOCCERSCHOOLS.CO.UK/CHELTHENHMTOWNFC/](http://WWW.OFFICIALSOCCERSCHOOLS.CO.UK/CHELTHENHMTOWNFC/)

**CHELTHENHAM TOWN FOOTBALL CLUB** info@ctfccp.com  
**01242 518630**

**27-28 March and 3-4 April**

**HOLIDAY CRAFTS FOR CHILDREN**

**Wed. and Thu. 27-28/03**  
Popsicle Planes

**Wed. and Thu. 3-4/04**  
Swallow hand puppets

[www.johnmooremuseum.org](http://www.johnmooremuseum.org)  
Address: Old Baptist Chapel, Tewkesbury  
01684 297174. admin@johnmooremuseum.org

**EASTER SPORTS CAMPS**  
Sports Development with Social-emotional Learning

**THE SPORTS PROJECT**

"I love that as well as getting better at sport, it is equally about developing the children as young people" - Parent

**R-Y6**  
9am - 4pm

**£12.50/DAY** (IF WHOLE WEEK)  
**£15/DAY** (SINGLE DAYS)

**BOOK NOW TO AVOID YOUR CHILD'S DISAPPOINTMENT**

- Kingsway Primary Academy, GL2 2AR
- Westlea Primary School, SN5 7BT
- Cam Woodfield Juniors, GL11 6JJ
- St Peter's Academy, SN14 0LL
- Benhall Infants, GL51 6PS
- St Briavel's Primary, GL15 6TD

To Book - click on link or copy into your browser  
[the-sports-project.class4kids.co.uk/camps](http://the-sports-project.class4kids.co.uk/camps)

**ChiChi KIDS with Kirsten**

**MUSICAL THEATRE FITNESS CLASS**  
WHERE FITNESS MEETS THE STAGE!  
NO DANCE EXPERIENCE NECESSARY  
ALL CHILDREN (AND PARENTS) WELCOME!

**ST MICHAEL'S CENTRE, BISHOPS CLEEVE**  
**TUESDAY AND THURSDAY MORNINGS**  
**IN THE SCHOOL HOLIDAYS**  
TERM TIME CLASSES TBC

**£7 PER CLASS**  
**BLOCK OF 4 FOR £24**  
FIRST CLASS HALF PRICE!

**CHICHI FIT WITH KIRSTEN - BISHOPS CLEEVE**

FOR MORE DETAILS CONTACT: [KIRSTEN@CHICHI-FIT.CO.UK](mailto:kirsten@chichi-fit.co.uk)



NEXT THING EDUCATION CAMPS PRESENTS

**Easter 2024**

Coding

Learning

Inventing

**TECH HOLIDAY CAMP**

Ofsted Registered

**EASTER CAMPS 2024**  
FOR BOYS AND GIRLS AGES 5 -11  
25TH MARCH -12TH APRIL 2024  
FIND YOUR NEAREST CAMP ON OUR WEBSITE

www.nextthing.education

HAF PLACES AVAILABLE

NEXT THING EDUCATION CAMPS PRESENTS

**EASTER CAMPS 2024**  
25TH MARCH - 12TH APRIL

Coding & Robots

Circuitry & Inventions

Creative Technology

STEM Engineering

Tech Fun

Movie Making | Video Game Design | Robot Coding | STEM Experiments | Engineering

**25TH - 28TH MARCH 2024 - 4 DAYS LIMITED SPACES**  
**2ND - 5TH APRIL 2024 - 4 DAYS LIMITED SPACES**  
**8TH - 12TH APRIL 2024 - 5 DAYS LIMITED SPACES**

"Wonderful Time"

"Our son had a wonderful time at Tech Camp, he was so proud of the song he made and mixed together himself and couldn't wait to play it for us when we collected him."

★★★★★

**How to book**

**STEP 1**  
VISIT OUR WEBSITE OR SCAN THE QR CODE BELOW

**STEP 2**  
FIND YOUR NEAREST CAMP

**STEP 3**  
ES OFF IF YOU BOOK BY 15 MARCH WITH CODE BELOW

**BOOK NOW AT**  
www.nextthing.education  
T: 01442 873150 E: info@nextthing.education

**Play Gloucestershire**

**PLAY GLOUCESTERSHIRE'S PLAY RANGERS**

**The Sports Field, Bishop's Cleeve, GL52 8LZ**  
**10am to 4pm**

**Wednesday 27th March**  
Climbing Wall  
Mobile Petting Farm

**Thursday 4th April**  
Silent Disco  
Giant Hungry Hippos

**Our Play Rangers will be on site alongside these other activities**  
External activities may be weather dependent and restrictions may apply

With thanks to Bishop's Cleeve Parish Council for funding these sessions

Bishop's Cleeve Parish Council

Our Play Ranger activities take place outdoors in all weathers and are open access. This means there is no registration, children are free to come & go as they please.

Our Activities are aimed at school aged children. Under 8's are welcome and should be accompanied by an adult.

We believe all children have the right to play. Please talk to us if your child needs additional mobility or other support to enjoy Play Rangers.

Play Gloucestershire  
Transforming lives through the power of play  
www.playgloucestershire.org.uk  
@play\_glos playgloucestershire

**Play Gloucestershire**

*Things you need to know about Play Gloucestershire*

Play Gloucestershire - a registered charity - is the leading provider of free, outdoor, active play in the county. Our Activities are aimed at school aged children. Under 8's are welcome and should be accompanied by a parent or carer. We love it when the whole household joins us at our sessions.

Our Play Ranger activities are open access. This means there is no registration - children can leave the site at any time. Our Play Rangers will not stop them and may not know that they have left.

We encourage children to take responsibilities for their own actions. We think this is good for them. They will be encouraged to resolve disagreements amongst themselves. We will intervene if absolutely necessary.

Play Gloucestershire believe that children need and want to take risks when they play. Our Play Rangers aim to respond to these needs by offering children stimulating, challenging environments for exploring and developing their abilities. In doing this, we aim to manage the level of risk so that children are not exposed to unacceptable risks. Our experience tells us that whilst children play outdoors they are likely to have accidents. If this causes concern please come along and speak to us about it.

All our activities are outdoors and include den building, fires, arts and crafts, sports and a range of playful games. We encourage children to play freely and choose what they do. They do not have to do anything if they don't want to. Children will get wet, hot, cold, smelly and dirty and need to wear appropriate clothing and footwear. Better to wear old play clothes than ruin your best!

Our Play Rangers will provide drinking water at all sessions. We promote healthy eating and sometimes will provide free fruit.

We believe all children have the right to play. Please talk to us if your child needs additional mobility or other support to enjoy Play Rangers.

For further information:  
Visit us at [www.playgloucestershire.org.uk](http://www.playgloucestershire.org.uk)  
Email [info@playgloucestershire.org.uk](mailto:info@playgloucestershire.org.uk)  
Phone 01452 505548  
Play Gloucestershire is a registered charity (1126562)



**ULTIMATE ACTIVITY CAMPS**

# GET SET FOR ULTIMATE SCHOOL HOLIDAY FUN!

Exceptional activity camps for children aged 4 to 14 at

## DEAN CLOSE PREP SCHOOL IN CHELTENHAM

Monday - Friday  
8 am to 6 pm  
this Easter & summer.

**ULTIMATEACTIVITY.CO.UK**

**EARLY BOOKING OFFER NOW ON!**

PAY BY CHILD CARE VOUCHERS

FRESH AIR FUN

CENTRO REGISTERED

INSPIRING CHILDREN'S EXPERIENCES

AWARDS WINNING

FLEXIBLE BOOKINGS

Ribston Hall High School invites you to our

# Admissions Information Morning

Discover your potential

Friday 12th April 2024

Understanding the grammar school process for Year 5 families.

Places are limited so please ensure you book through our website:  
[www.ribstonhall.gloucs.sch.uk/join-us/school-tours/open-day](http://www.ribstonhall.gloucs.sch.uk/join-us/school-tours/open-day)

PATE'S GRAMMAR SCHOOL, PRINCESS ELIZABETH WAY, GL51 0HG

SATURDAY, MARCH 16 @ 10:30 TILL 14:00

# PATE'S SPRING FAIR

ACTIVITIES: CLIMBING WALL, TALK FROM A GREAT BRITISH BAKE OFF WINNER, STUDENT STALLS, LIVE MUSIC, REFRESHMENTS AND MORE

LTA BIG TENNIS WEEKENDS

# GIVE TENNIS A GO

Join us for the Cheltenham Tennis Club Open Day!  
Saturday 6th April from 10am-1pm.  
All ages and standards welcome!

Cheltenham Tennis Club  
3 Tewkesbury Road  
Uckington, Cheltenham, GL51 9SL

Book your free place at:  
<https://cheltenhamtennis.club>

# PIXEL POWER

## ST JOHN'S PRIMARY SCHOOL

Albion Street, Cheltenham, Gloucestershire GL52 2SN

Date: Thursday 28th March 2024  
Sessions: 9am - 1pm & 1pm - 5pm  
#HAF #HAF2024

This activity is for children and young people eligible for free school meals and other qualifying groups.

Design and code pixel art graphics into a Snake game

Get creative with arts, crafts & model making

For ages 8-14 only. Includes lunch.

Book a free ticket for this activity from:  
[educraft.uk/cheltenham](http://educraft.uk/cheltenham)